

Vital Signs

Saint Bartholomew's Episcopal Church, Nashville, TN

generated from

The Congregation Assessment Tool
10/31/2016

"And this is my prayer: that your love may abound more and more in knowledge and depth of insight, so that you may be able to discern what is best and may be pure and blameless until the day of Christ, filled with the fruit of righteousness that comes through Jesus Christ - to the glory and praise of God."

;

Philippians 1:9-11

Your name: _____

Presenter: _____

Date: _____

Holy Cow! Consulting
PO Box 304
Westerville, OH 43086
(888)546-4132
office@holycowconsulting.com

Notions

- T F If members authentically feel that their church is warm and supportive, all other problems tend to take care of themselves.
- T F The more people agree on a basic set of conservative Christian beliefs, the better they get along with one another.
- T F The best predictor for high morale in a church is the quality of pastoral care given by the clergy.
- T F The percentage of household income given in an average size church is about 4%.
- T F Churches that rank “reaching new members” as the highest priority tend to be growing.
- T F The strongest predictor of a growing church is its spiritual vitality.
- T F The best predictor for strong financial giving in a church is the priority given to developing stewardship programs.
- T F About 80% of the members of a typical parish are clearly satisfied with things in the church.
- T F In general, churches are much more interested in improving the music in worship than in improving their building.
- T F Churches where members indicate they have a vital faith have a more difficult time raising money.

Your Thoughts:

;

Lord, you are the God of all truth.

You know us through and through.

You reveal to us what we do not yet know.

You bring us out of darkness and into your wonderful light.

You invite us to return to the Garden where we know and are known.

You offer us love that delivers us from fear and hiding.

You reconcile us to our loved ones.

You deliver us from blame and accusation.

You disclose to us the gifts in the depths of our souls.

You fill us with your Spirit and empower us for service.

You open our eyes to the brokenness that cripples our best intentions.

You pour oil into our wounds and carry us in your arms.

You show us the patterns that keep us bound to failure.

You open the bars of our captivity and set the prisoner free.

You are patient with our resistances to change.

Your judgment is always mixed with mercy.

When our minds cast a shell about our hearts,

Your love melts a pathway to the depth of our beings.

Open our minds and our hearts to the witness of our brothers and sisters,

Give us that love that casts out all fear.

AMEN

Key Indicators



Overall Satisfaction

On the whole, I am satisfied with how things are in our church.

| | |
|-------------------------------------|------|
| Clearly agree | 66% |
| On the fence | 31% |
| Clearly disagree | 3% |
| Rating of church satisfaction level | High |

Overall Energy

It seems to me that we are just going through the motions of church activity. There isn't much excitement about it among our members.

| | |
|-------------------------------|------|
| Clearly agree | 6% |
| On the fence | 42% |
| Clearly disagree | 52% |
| Rating of church energy level | High |

Attendance Trend

Compared with 3 years ago, I attend worship...

| | |
|------|-----|
| Less | 13% |
| Same | 65% |
| More | 22% |

Average annual change in attendance **3%**

Value of Activity Beyond Worship

On the whole, participation in church activities is very meaningful to me...

| | |
|--|---------|
| Clearly agree | 65% |
| On the fence | 30% |
| Clearly disagree | 5% |
| Rating of church activity beyond worship | Average |

Top Three Priorities

Where would you like additional energy placed to expand or improve our ministries?

| | | |
|--------|--------------|--|
| First | Question #52 | Develop the spiritual generosity of the people to financially support the ministry of the church. |
| Second | Question #65 | Develop ministries that work toward healing those broken by life circumstances. |
| Third | Question #59 | Develop and implement a comprehensive strategy to reach new people and incorporate them into the life of the church. |

Survey Process Statistics

| | |
|---|-----|
| Number of respondents | 349 |
| Response rate as percentage of average attendance | 71% |

Drivers of Member Satisfaction

When members are asked how they feel things are going in their church overall, they generally don't think about the entire array of ministries and qualities that characterize the congregation. Instead, they focus on a relatively small number of things. By way of analogy, when persons are asked what they like about their car, they generally focus on a few things that vary depending upon the person. One person might focus on fuel economy and reliability. Another might focus on luxury and performance. Hardly any will focus on things like the exhaust system or brakes, even though those items are very important. In other words, they are very focused on some things, less focused on others.

What members focus on is unique to every congregation, much like a fingerprint is unique for every individual. Some churches are more focused on the work of their clergy person (clergy-focused), some on the decision making group (power-focused), and some on the various ministries of the church (ministry- focused). In some cases, we can identify what people focus on when they think about how satisfied they are with the church overall. We call these areas of focus "Drivers of Satisfaction". In some cases, we can identify what people focus on when they think about the level of excitement in the church. We call these areas of focus "Drivers of Energy."

Drivers of Satisfaction

The pattern of responses from your members suggests that when they think about how satisfied they are with things in your church overall, they tend to focus on the areas below, called "Drivers of Satisfaction". The degree to which they focus on these items is indicated in the column to the right. This column does not tell us how you scored on the question, it tells us how important the item is to your members in determining how satisfied they are. (If there are no items listed below, it means that we are unable to identify what members are focused on from their responses.)

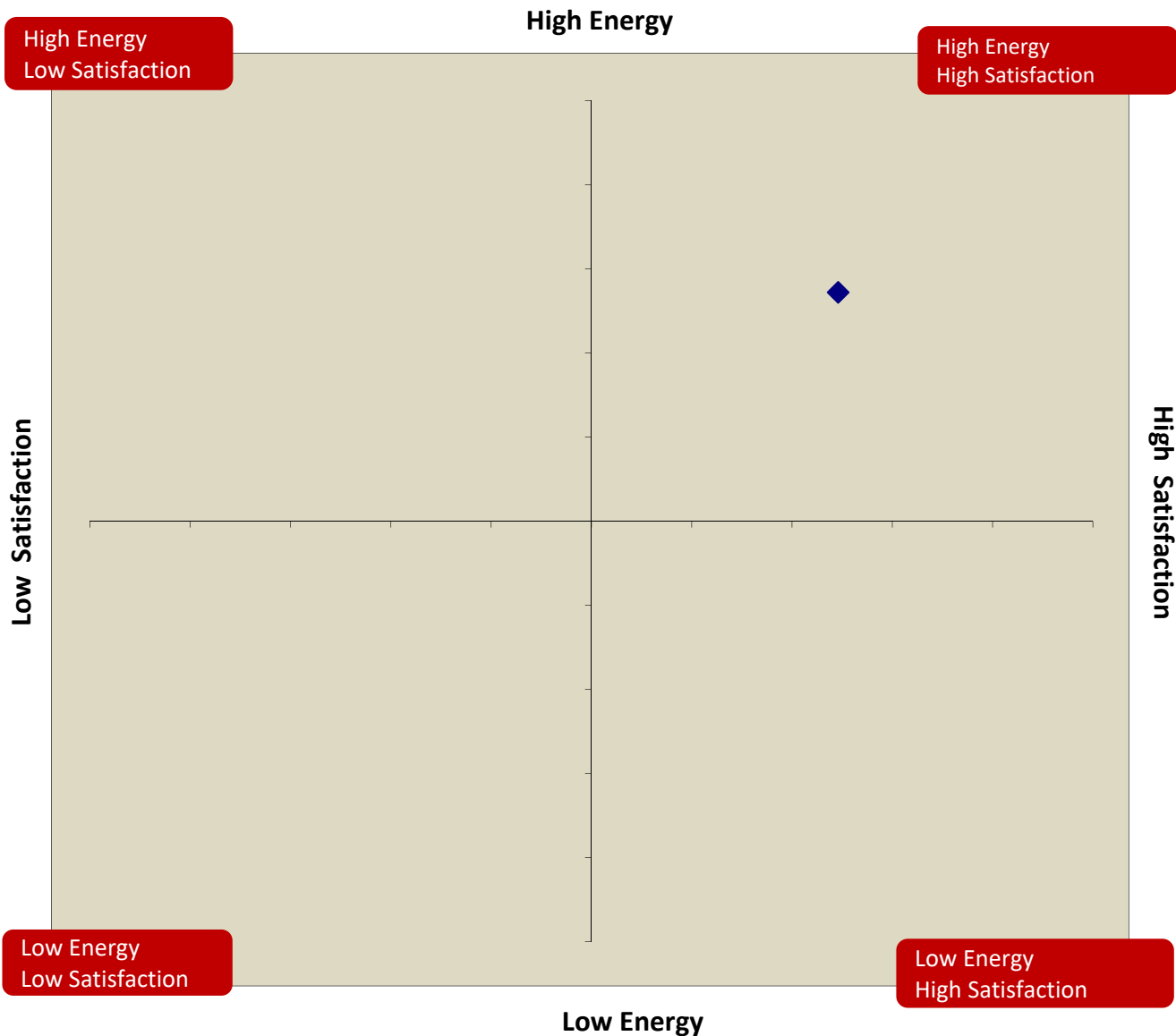
| | | Degree of Focus |
|------------------|--|------------------------|
| Driver #1 | Persons who serve as leaders in our church are representative of the membership. | Moderate |
| | | |
| | | |

Drivers of Energy

The pattern of responses from your members suggests that when members think about the level of excitement in your church overall they tend to focus in the areas below, called "Drivers of Energy." The degree to which they focus on these items is indicated in the column to the right. This column does not tell us how you scored on the question, it tells us how important the item is to your members in determining the energy in the church. (If there are no items listed below, it means that we are not able to identify what members are focused on from their responses.)

| | | Degree of Focus |
|--|---|------------------------|
| | NO DRIVERS OF ENERGY EMERGED IN THE PATTERN OF YOUR MEMBER RESPONSES. | |
| | | |
| | | |

The Energy-Satisfaction Map



The levels of satisfaction and energy have been found to be reliable indicators of the health and vitality of a church. There are four quadrants on this map.

The **high energy-low satisfaction** quadrant is the chaos quadrant. Churches in this quadrant are often struggling to structure and channel their energy into a direction they feel good about.

The **low energy-low satisfaction** quadrant is the recovery quadrant. Churches in this quadrant require major changes in order to regain a significant level of vitality and health.

The **low energy-high satisfaction** quadrant is the static quadrant. Churches in this quadrant have normalized a low level of vitality in the church which enables them to be relatively satisfied.

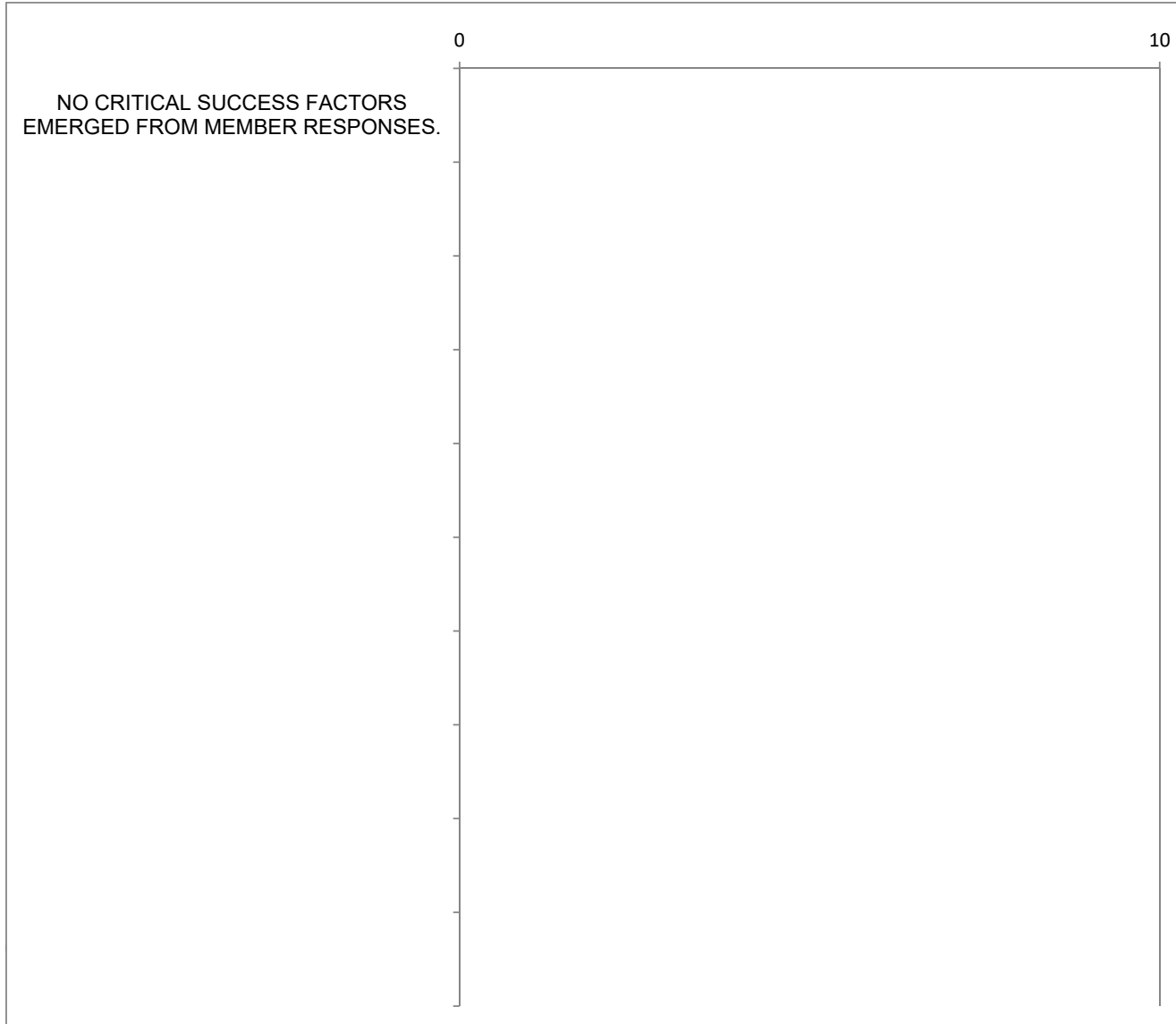
The **high energy-high satisfaction** quadrant is the transformation quadrant. Churches in this quadrant are sources of new meaning and purpose for their members. They may also serve as mentors to other churches.

Critical Success Factors for Improving Satisfaction

If the goal is to move a church as high into the transformational quadrant as possible, where do leaders begin? The chart below suggests where improvements might have the biggest impact on how members are feeling about the church overall. The higher the factor on this chart, the more important it is. The longer the bar, the more urgent is the need to address that issue. Items that do not appear on the list may be important, but working on them may not change how people feel about the church overall.

Critical Success Factors in the *Urgent* range generally need immediate attention. External resources are often helpful to leadership teams dealing with these issues. These resources might be found in a regional or national association, through colleagues serving in other churches, or by contracting with professional consultants.

If there are no Critical Success Factors listed below, it means that the Church Assessment Tool did not identify any significant *internal* issues that need to be addressed. This suggests that the leadership can turn its attention to strategic options that include numeric growth, expansion of facilities or programs, replication in other locations (including mentoring of other leaders), or increased external impact.



20-34 Significant
(discuss soon)

35-50 Important
(address soon)

>50 Urgent
(address now)

Priorities

Overall Priorities



When members were asked where they wanted additional energy placed, this is how they ranked the seventeen options on the survey:

| Rank | Question # | Priority | Mean |
|------------------------|--------------|---|------|
| First High | Question #52 | Develop the spiritual generosity of the people to financially support the ministry of the church. | 3.29 |
| Second Average | Question #65 | Develop ministries that work toward healing those broken by life circumstances. | 3.08 |
| Third Average | Question #59 | Develop and implement a comprehensive strategy to reach new people and incorporate them into the life of the church. | 2.95 |
| Fourth High | Question #51 | Create more opportunities for people to form meaningful relationships (for example, small groups, nurtured friendships, shared meals, etc). | 2.95 |
| Fifth Average | Question #54 | Strengthen the process by which members are called and equipped for ministry and leadership. | 2.94 |
| Sixth Average | Question #58 | Provide more opportunities for Christian education and spiritual formation at every age and stage of life. | 2.91 |
| Seventh Average | Question #66 | Expand outreach ministries that provide direct services to those living on the margins of society. | 2.84 |
| Eighth High | Question #62 | Work as an advocate for social and institutional change so that society might better reflect the values of the kingdom of God. | 2.84 |
| Ninth Average | Question #63 | Strengthen the management and support of persons in various ministries. | 2.71 |
| Tenth High | Question #55 | Strengthen the pastoral response of the church in serving people with special needs. | 2.67 |
| Eleventh Low | Question #64 | Work to renew and revitalize the community around the church by building coalitions with partners. | 2.54 |
| Twelfth Average | Question #61 | Adapt the opportunities provided by the church making them more accessible given the pace and schedule of my life. | 2.49 |
| Thirteenth Average | Question #50 | Deepen our sense of connection to God and one another through stronger worship services. | 2.43 |
| Fourteenth High | Question #53 | Enlarge or improve the physical facilities of the church to expand or enhance our ministries. | 2.25 |
| Fifteenth Very low | Question #57 | Make necessary changes to attract families with children and youth to our church. | 2.20 |
| Sixteenth Average | Question #60 | Expand the international mission of the church with both financial resources and personal involvement. | 2.17 |
| Seventeenth Average | Question #56 | Change or improve the music of the church to deepen our worship experience. | 1.70 |

Note: Items can be at the bottom of this list for one of two reasons. An item can be at the bottom of the list because it is *less important to respondents*. Alternatively, it can be at the bottom of the list because it is very important to respondents, but *already being performed at such a high level* that additional energy is not required. The rating beneath the priority rank (**very low, low, average, high, very high**) indicates its strength compared to other churches.

Priorities by Group



Top Priorities for Persons Under 35 Years

| | | |
|--------|------|--|
| First | Q#65 | Develop ministries that work toward healing those broken by life circumstances. |
| Second | Q#62 | Work as an advocate for social and institutional change so that society might better reflect the values of the kingdom of God. |
| Third | Q#51 | Create more opportunities for people to form meaningful relationships (for example, small groups, nurtured friendships, shared meals, etc). |
| Fourth | Q#52 | Develop the spiritual generosity of the people to financially support the ministry of the church. |
| Fifth | Q#66 | Expand outreach ministries that provide direct services to those living on the margins of society. (i.e. homeless, immigrant, transient persons) |
| Sixth | Q#54 | Strengthen the process by which members are called and equipped for ministry and leadership. |

Top Priorities for Persons 35 to 64 Years

| | | |
|--------|------|---|
| First | Q#52 | Develop the spiritual generosity of the people to financially support the ministry of the church. |
| Second | Q#65 | Develop ministries that work toward healing those broken by life circumstances. |
| Third | Q#58 | Provide more opportunities for Christian education and spiritual formation at every age and stage of life. |
| Fourth | Q#51 | Create more opportunities for people to form meaningful relationships (for example, small groups, nurtured friendships, shared meals, etc). |
| Fifth | Q#59 | Develop and implement a comprehensive strategy to reach new people and incorporate them into the life of the church. |
| Sixth | Q#54 | Strengthen the process by which members are called and equipped for ministry and leadership. |

Top Priorities for Persons 65+ Years

| | | |
|--------|------|--|
| First | Q#52 | Develop the spiritual generosity of the people to financially support the ministry of the church. |
| Second | Q#65 | Develop ministries that work toward healing those broken by life circumstances. |
| Third | Q#59 | Develop and implement a comprehensive strategy to reach new people and incorporate them into the life of the church. |
| Fourth | Q#54 | Strengthen the process by which members are called and equipped for ministry and leadership. |
| Fifth | Q#51 | Create more opportunities for people to form meaningful relationships (for example, small groups, nurtured friendships, shared meals, etc). |
| Sixth | Q#66 | Expand outreach ministries that provide direct services to those living on the margins of society. (i.e. homeless, immigrant, transient persons) |

Priorities by Group

Top Priorities for Infrequent Attenders (Less than once per month)

| | | |
|--------|------|---|
| First | Q#62 | Work as an advocate for social and institutional change so that society might better reflect the values of the kingdom of God. |
| Second | Q#52 | Develop the spiritual generosity of the people to financially support the ministry of the church. |
| Third | Q#59 | Develop and implement a comprehensive strategy to reach new people and incorporate them into the life of the church. |
| Fourth | Q#51 | Create more opportunities for people to form meaningful relationships (for example, small groups, nurtured friendships, shared meals, etc). |
| Fifth | Q#60 | Expand the international mission of the church with both financial resources and personal involvement. |
| Sixth | Q#64 | Work to renew and revitalize the community around the church by building coalitions with partners that share this vision and commitment. |

Top Priorities for Frequent Attenders (Once per month or more)

| | | |
|--------|------|---|
| First | Q#52 | Develop the spiritual generosity of the people to financially support the ministry of the church. |
| Second | Q#65 | Develop ministries that work toward healing those broken by life circumstances. |
| Third | Q#54 | Strengthen the process by which members are called and equipped for ministry and leadership. |
| Fourth | Q#51 | Create more opportunities for people to form meaningful relationships (for example, small groups, nurtured friendships, shared meals, etc). |
| Fifth | Q#59 | Develop and implement a comprehensive strategy to reach new people and incorporate them into the life of the church. |
| Sixth | Q#58 | Provide more opportunities for Christian education and spiritual formation at every age and stage of life. |

Priorities by Group

The Bubble Chart on the next page provides you with a large amount of information at a glance. The larger the bubble, the more important the goal is to your church. The largest bubbles on the page represent the highest priorities of your church. Members want a lot of additional energy invested in these. The smallest bubbles on the page represent the lowest priorities of your church. Members want little additional energy invested in these, either because they are less important or because they are being done well already. Small bubbles represent areas where members do not want to see many changes made.

You can explore the priorities of seven different groups on this page:

- Persons under 35 years
- Persons from 35 to 64 years
- Persons 65 years plus
- Infrequent attendees (less than once a month)
- Frequent attendees (once a month or more)
- Backdoor (worshipping less than three years ago)
- Frontdoor (worshipping more than three years ago)

Look across the groups (columns) to discover which rows have bubbles that are about the same size. (You might want to draw a horizontal box around the bubbles that are about the same size.) These are goals that are common across all the groups. These are points of unity to build on, especially if they are higher priorities.

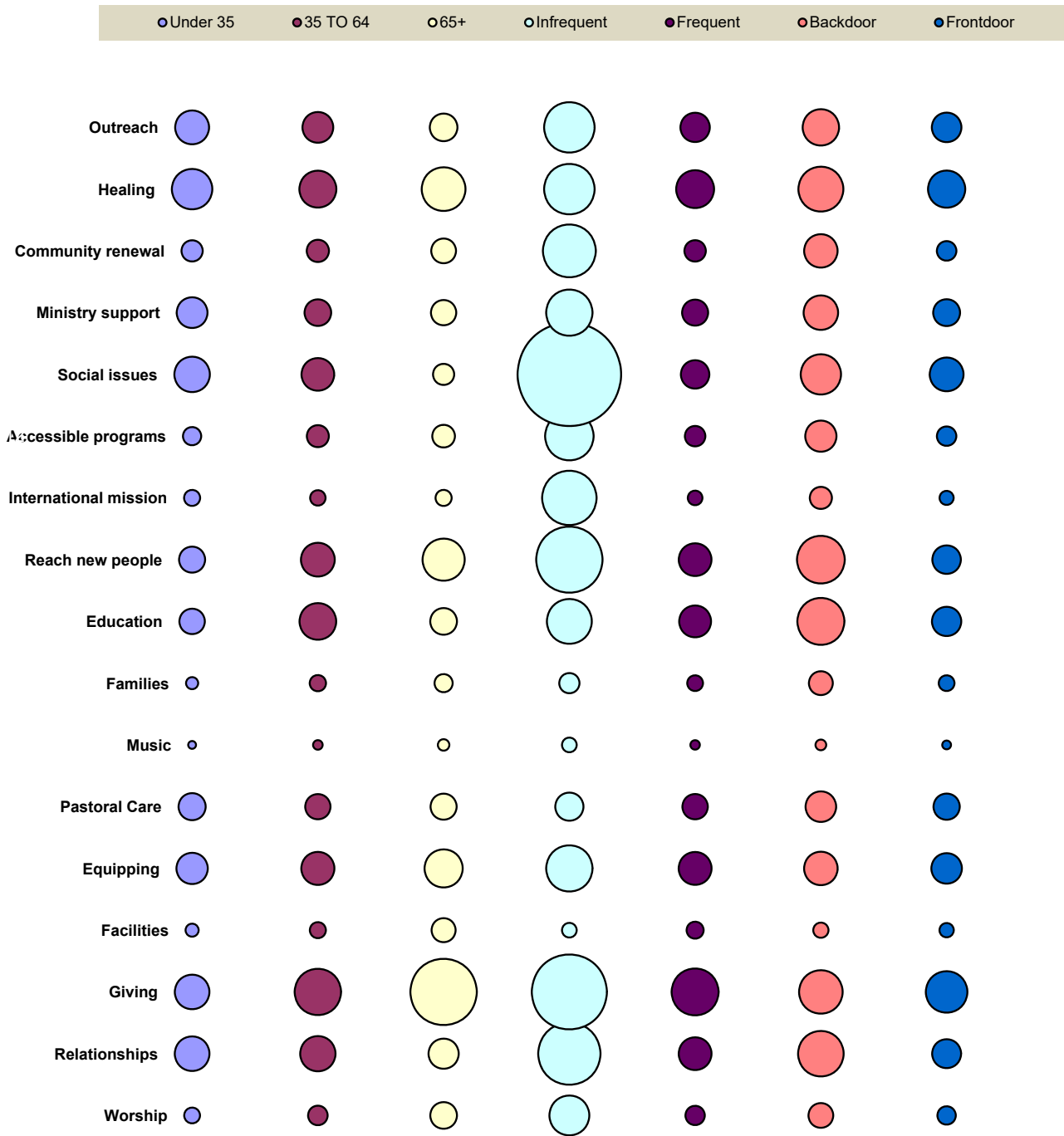
Look across the groups to discover which rows have bubbles that are very different in size. (As above, you might also want to draw a box around the bubbles that are very different in size). These are goals that are different for these groups. The greater the difference in size, the larger is the difference in priority across the different groups. These are points that will need to be negotiated.

If the Vital Signs report indicates that one of the priorities is reaching families with children and youth, the leadership might want to pay particular attention to the distribution of bubble sizes in the "Under 35" column.

It can also be instructive to look at the size of the bubbles in the "Backdoor" column. Unusually large bubbles there can give the leadership hints about why folks are becoming less involved.

If the page has a large number of bigger bubbles, it usually indicates that respondents are looking for changes in a large number of areas. This needs to be compared/contrasted with the Flexibility Score on the Descriptive Map. If the page has a small number of bigger bubbles, it usually indicates that respondents are not looking for as many changes.

Priorities by Group



Theological Perspective Index

The Theological Perspective Index is a measure of the degree to which members of the congregation hold more conservative or progressive views regarding such issues as the nature of the Scripture, the role of conversion in social change, and their relationship to the historic declarations of the church.

Unlike the other indices such as Hospitality or Morale, the value of the Theological Perspective Index varies from leader to leader. Some pastors may want to see the index increased. Others may feel personal growth requires that it decrease. Each church will have to prayerfully consider how they feel led in developing the theological climate of the congregation.

Question Text

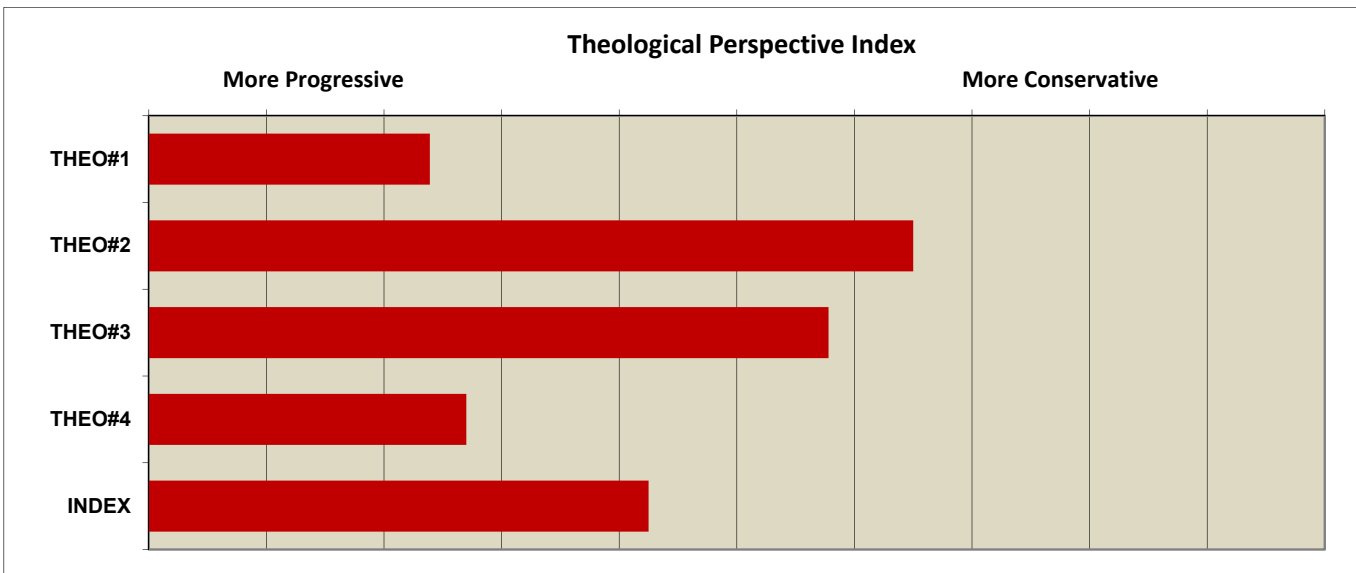
- THEO#1 Converting persons to Christ must be the first step in creating a better society.
- THEO#2 Our congregation is committed to abide by the unchanging, historic faith as handed down through the centuries.
- THEO#3 Scripture is the literal Word of God without error, not only in matters of faith, but also in historical, geographical, and other secular matters.
- THEO#4 The main purpose of Christian education is to help people know what is in the Bible.

Response Percentages (These are the scores from your congregation.)

| Question | Strongly Disagree | Disagree | Tend to Disagree | Tend to Agree | Agree | Strongly Agree |
|----------|-------------------|----------|------------------|---------------|-------|----------------|
| THEO#1 | 8.6 | 20.1 | 27.1 | 22.3 | 15.3 | 6.7 |
| THEO#2 | 1.0 | 3.5 | 12.1 | 32.9 | 35.3 | 15.2 |
| THEO#3 | 16.0 | 17.3 | 21.7 | 14.5 | 18.2 | 12.3 |
| THEO#4 | 3.4 | 21.1 | 30.0 | 30.7 | 11.1 | 3.7 |

Comparative Profile (These show how your scores compared with other churches.)

Compared with other churches your theological diversity is: Average



Flexible Style Index

The Flexible Style Index registers the degree to which the church is willing to make adjustments in the way it goes about its ministry. The more flexible a church, the more likely it is to adapt to the particular context in which it is serving to meet either the needs of its members or those of the community. The less flexible a church, the more likely it is to believe that a particular style is central to its identity.

The degree of flexibility in a church should be consistent with its strategic priorities. For example, if a church indicates that one of its priorities is to make necessary changes to attract families with children and youth, it should have the degree of flexibility necessary to achieve that goal.

Question Text

FLEX#1 Our members welcome changes in worship.

FLEX#2 Our church tends to stay very close to established ways of doing things.

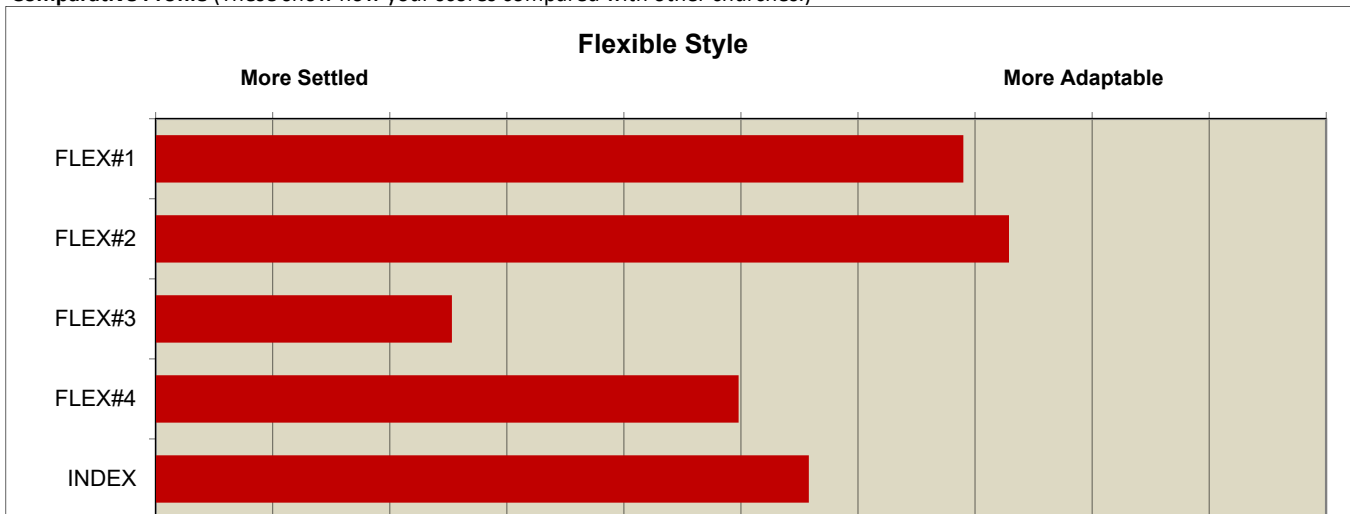
FLEX#3 We are willing to adapt our worship to the needs and circumstances of the people we want to reach in our local community.

FLEX#4 Our church changes its program from time to time to meet the changing needs of its members.

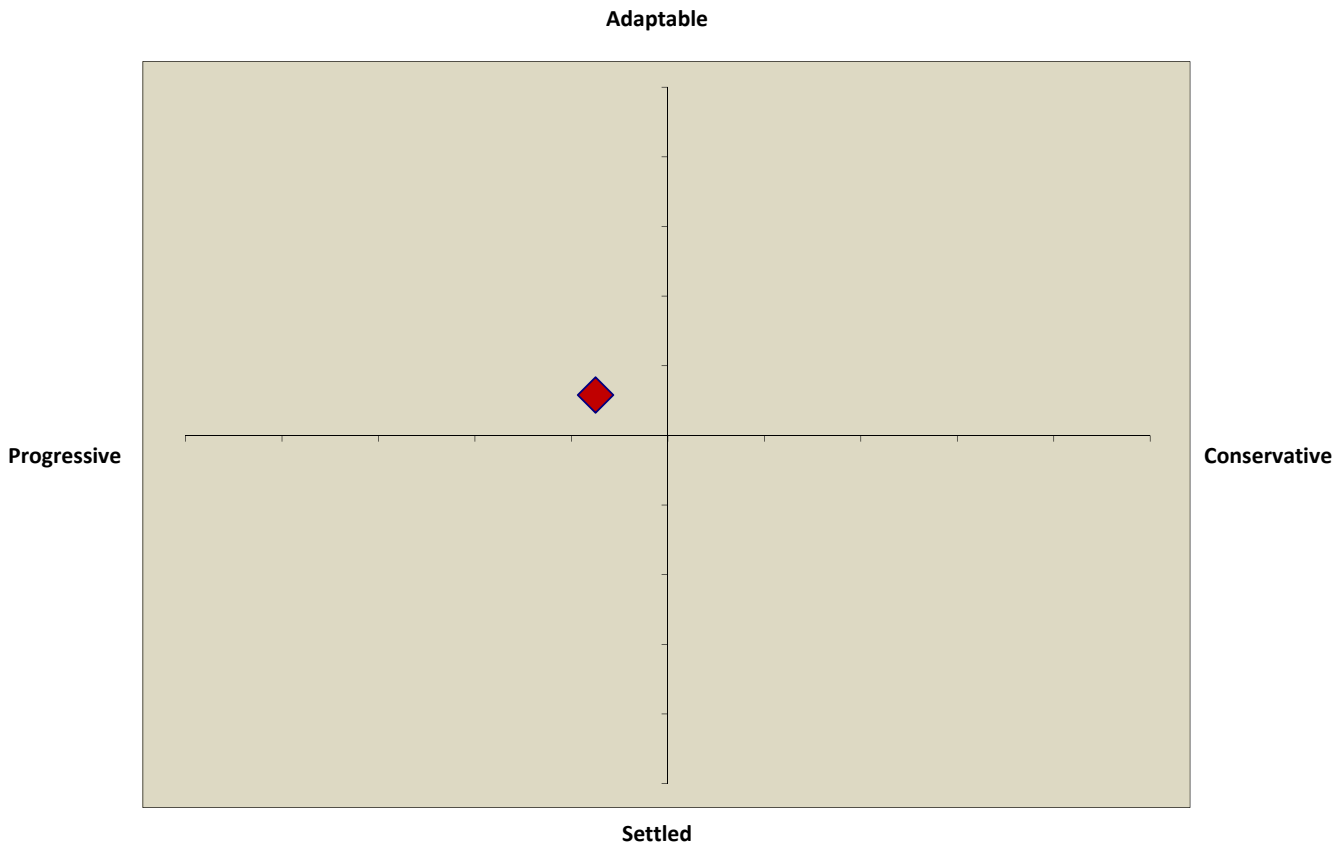
Response Percentages (These are the scores from your congregation.)

| Question | Strongly Disagree | Disagree | Tend to Disagree | Tend to Agree | Agree | Strongly Agree |
|----------|-------------------|----------|------------------|---------------|-------|----------------|
| FLEX#1 | 1.5 | 4.5 | 28.7 | 39.2 | 22.8 | 3.4 |
| FLEX#2 | 0.3 | 2.6 | 27.8 | 45.4 | 19.9 | 4.0 |
| FLEX#3 | 2.9 | 7.0 | 29.5 | 36.9 | 18.0 | 5.7 |
| FLEX#4 | 1.1 | 2.8 | 9.9 | 51.1 | 29.8 | 5.3 |

Comparative Profile (These show how your scores compared with other churches.)



Note: Question two (2) is negatively worded relative to the index. In the Comparative Profile, the polarity has been reversed. In every case a longer bar suggests a more adaptable evaluation.



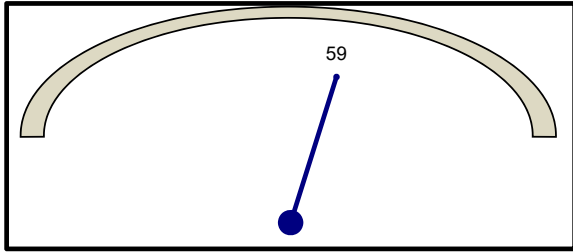
This map indicates the particular style of a church using two characteristics. The first characteristic is whether the church is theologically conservative or progressive. The second characteristic is whether the church is more adaptable or settled in its approach to its life. The combination of these two characteristics produces the four different possibilities for the overall style of a church. These are noted in the four quadrants of the map.

1. **Progressive-Adaptable** churches
2. **Progressive-Settled** churches
3. **Conservative-Adaptable** churches
4. **Conservative-Settled** churches

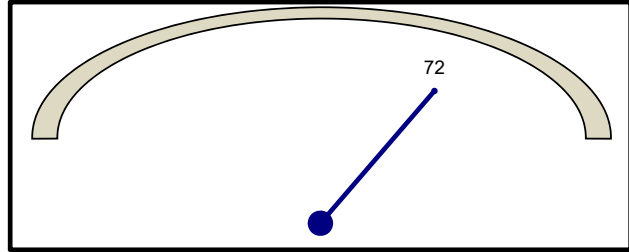
Each of these quadrants represent core values that need to be clarified relative to theology and style. It can also be helpful to explore whether strengths have been fully developed and to identify opportunities for further development. Leaders can also work to understand how the vulnerabilities inherent in their type can be hampering vitality and growth.

Performance Dashboard

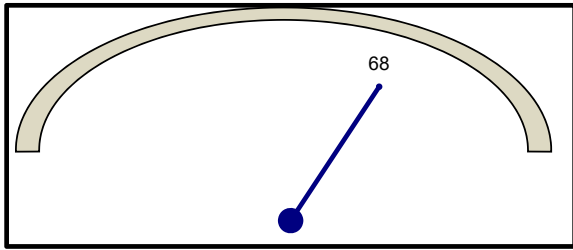
Hospitality



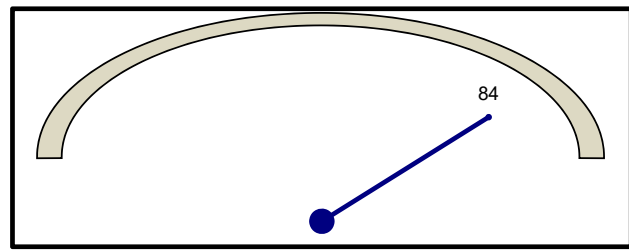
Morale



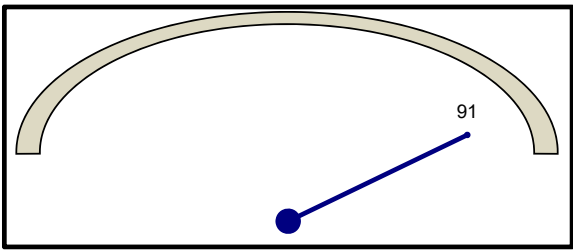
Conflict Management



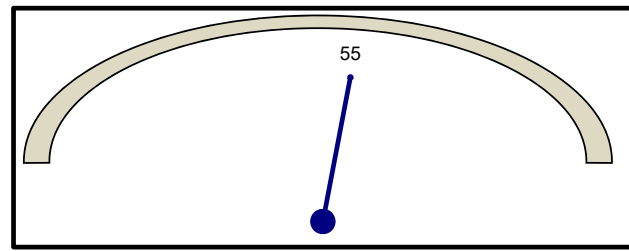
Governance



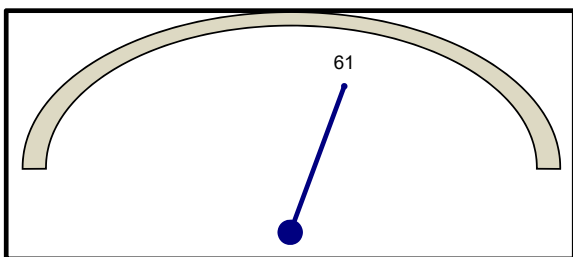
Spiritual Vitality



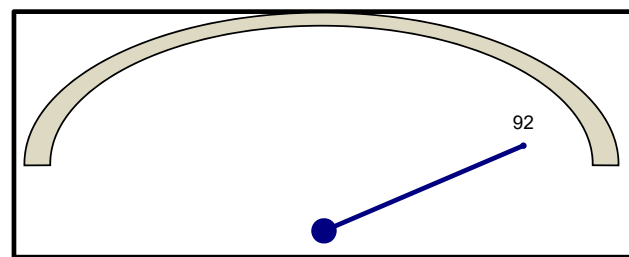
Readiness for Ministry



Engagement in Education



Worship and Music



Performance Indices

Hospitality Index

The Hospitality Index seeks to measure the degree to which members perceive that the congregation is engaged in offering themselves and their resources to folks who are new, different, or in need. Persons generally expect that churches will be inviting and supportive communities. However, church communities have decidedly different "temperatures" to those who enter them. Some churches feel cold. Others feel warm. It can be difficult for members to gauge this accurately since some may have a network of relationships that others do not. If scores in this indices are low, it is important to give it priority.

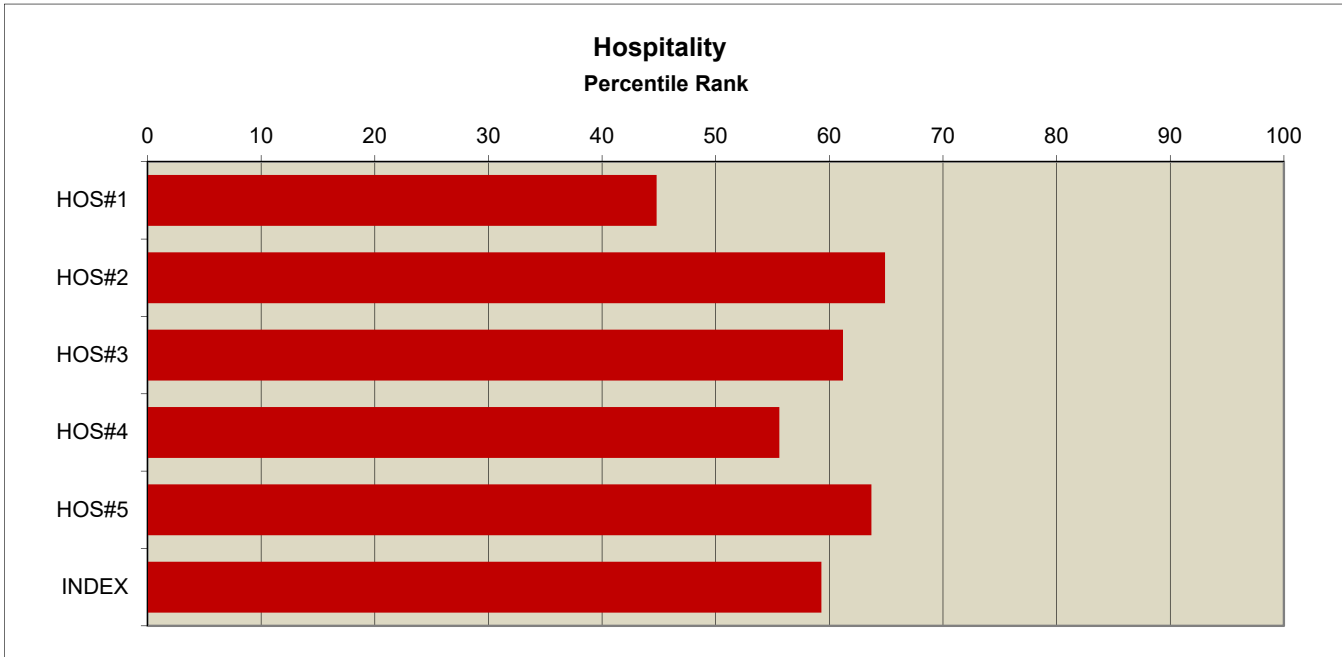
Question Text

- HOS#1 Our church welcomes and is enriched by persons from many different walks of life.
- HOS#2 Being part of this church community has given new meaning to my life.
- HOS#3 A friendly atmosphere prevails among the members of our church.
- HOS#4 I sense an atmosphere of genuine care and concern among our members in time of personal need.
- HOS#5 Members in our church have been prepared to personally welcome guests in worship services.

Response Percentages (These are the scores from your congregation.)

| Question | Strongly Disagree | Disagree | Tend to Disagree | Tend to Agree | Agree | Strongly Agree |
|----------|-------------------|----------|------------------|---------------|-------|----------------|
| HOS#1 | 1.5 | 1.8 | 7.4 | 27.3 | 37.1 | 24.9 |
| HOS#2 | 0.6 | 2.4 | 8.2 | 25.1 | 29.0 | 34.7 |
| HOS#3 | 1.2 | 0.6 | 1.8 | 14.8 | 39.8 | 41.9 |
| HOS#4 | 0.6 | 0.6 | 2.8 | 12.7 | 38.5 | 44.7 |
| HOS#5 | 1.0 | 3.0 | 8.5 | 26.9 | 38.0 | 22.6 |

Comparative Profile (These show how your scores compared with other churches.)



Performance Indices

Morale Index

Morale is the positive, passionate, and persuasive engagement of members in the mission of the church. It is positive in that people find energy generated in their experiences with the church. It is passionate in that it engages people emotionally and not simply conceptually or in dutiful behavior. It is persuasive in that people sense the need to bring others into the experience.

Developing high morale must be a critical long term strategy. It is not as easily changed as the Hospitality Index. It requires clear direction, the ability to set goals and meet them, and the development of a sense that the work of the church is very important in the world.

Question Text

*MOR#1 It seems to me that we are just going through the motions of church activity. There isn't much excitement about it among our members.

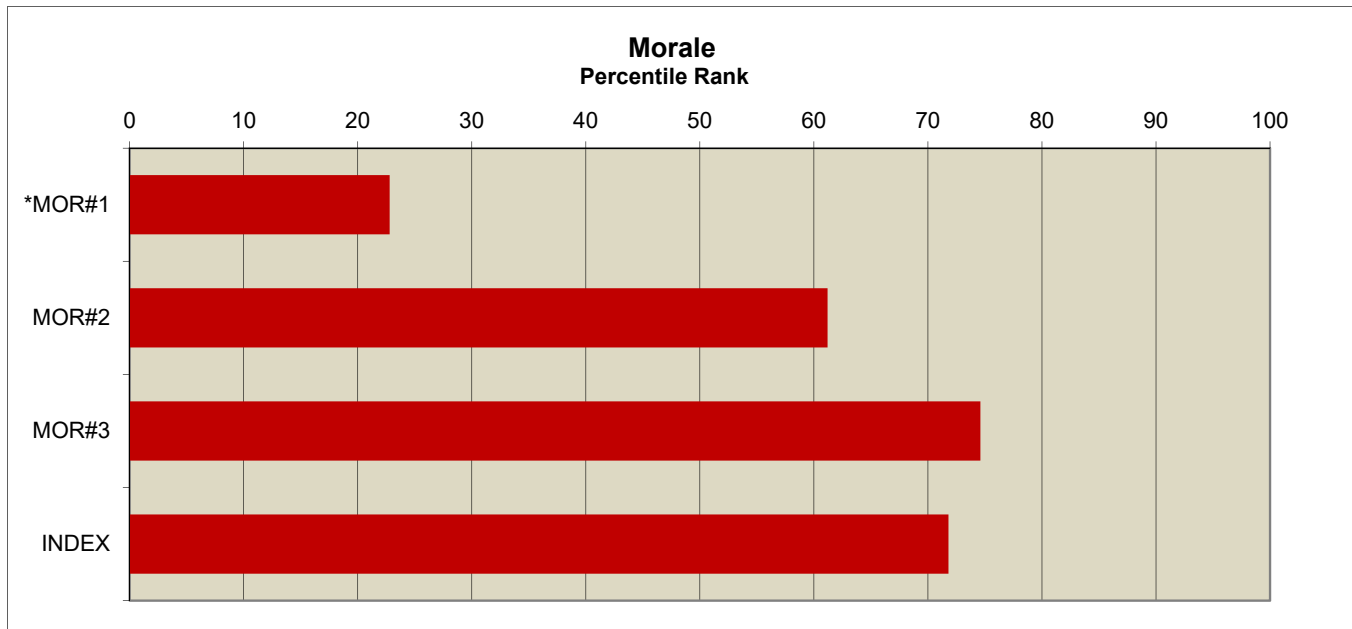
MOR#2 The whole spirit in our congregation makes people want to get as involved as possible.

MOR#3 On the whole, I am satisfied with how things are in our church.

Response Percentages (These are the scores from your congregation.)

| Question | Strongly Disagree | Disagree | Tend to Disagree | Tend to Agree | Agree | Strongly Agree |
|----------|-------------------|----------|------------------|---------------|-------|----------------|
| *MOR#1 | 10.6 | 41.7 | 29.3 | 12.4 | 5.1 | 0.9 |
| MOR#2 | 0.3 | 5.6 | 21.1 | 39.0 | 28.2 | 5.9 |
| MOR#3 | 0.6 | 2.5 | 7.7 | 23.1 | 45.8 | 20.3 |

Comparative Profile (These show how your scores compared with other churches.)



Note: A question with an asterisk is negatively worded relative to the index. In the Comparative Profile, a shorter bar is preferred for questions that are negatively worded. The overall index scores takes this into account in its calculation.

Performance Indices

Conflict Management Index

The Conflict Management Index measures the degree to which members believe that conflict is appropriately managed and, where possible, resolved. It is important to note that the Conflict Management Index does not correlate strongly with the Hospitality Index or the Spiritual Vitality Index. This means that a congregation can perceive itself as having a strong faith and a genuine concern for one another, yet still experience painful conflict. This is because the tools required to deal with conflict go beyond good intentions, and involve specific training that nearly anyone can learn...if they choose to do so.

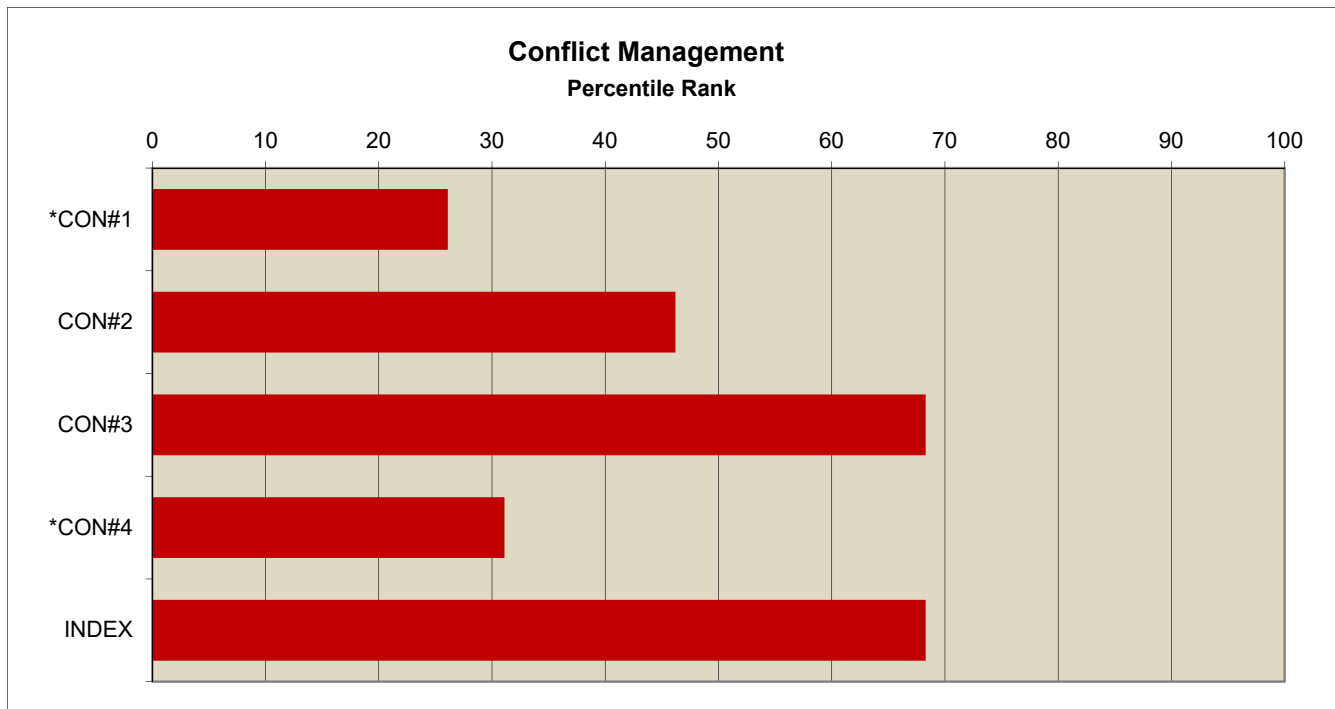
Question Text

- *CON#1 There is a disturbing amount of conflict in our congregation.
- CON#2 Problems between groups in this church are usually resolved through mutual effort.
- CON#3 Among most of our members there is a healthy tolerance of differing opinions and beliefs.
- *CON#4 There is frequently a small group of members that opposes what the majority want to do.

Response Percentages (These are the scores from your congregation.)

| Question | Strongly Disagree | Disagree | Tend to Disagree | Tend to Agree | Agree | Strongly Agree |
|----------|-------------------|----------|------------------|---------------|-------|----------------|
| *CON#1 | 14.2 | 53.5 | 23.4 | 6.7 | 2.1 | 0.0 |
| CON#2 | 0.0 | 6.1 | 11.1 | 35.4 | 44.9 | 2.5 |
| CON#3 | 0.7 | 1.3 | 6.9 | 32.5 | 47.9 | 10.8 |
| *CON#4 | 3.8 | 31.9 | 28.1 | 23.1 | 11.9 | 1.3 |

Comparative Profile (These show how your scores compared with other churches.)



Note: A question with an asterisk is negatively worded relative to the index. In the Comparative Profile, a shorter bar is preferred for questions that are negatively worded. The overall index scores takes this into account in its calculation.

Performance Indices

Governance Index

The Governance Index measures the degree to which members believe that the decision making structures and processes of the church are open to their concerns and input. While church polity may lodge almost all decision-making in one group of persons, a Board for example, there are many creative ways in which that authority can be delegated or shared. Committees, commissions, task forces, leadership assemblies, and joint meetings expand the decision-making circle. Regular input from surveys, focus groups, and interviews can give people a sense of involvement in the way decisions are made. As people perceive openness in the way leaders make decisions, they are more likely to have high morale and support the decisions that have been made.

Question Text

GOV#1 The leaders of our church show a genuine concern to know what people are thinking when decisions need to be made.

*GOV#2 The same small group of people seem to make most of the important decisions in our church.

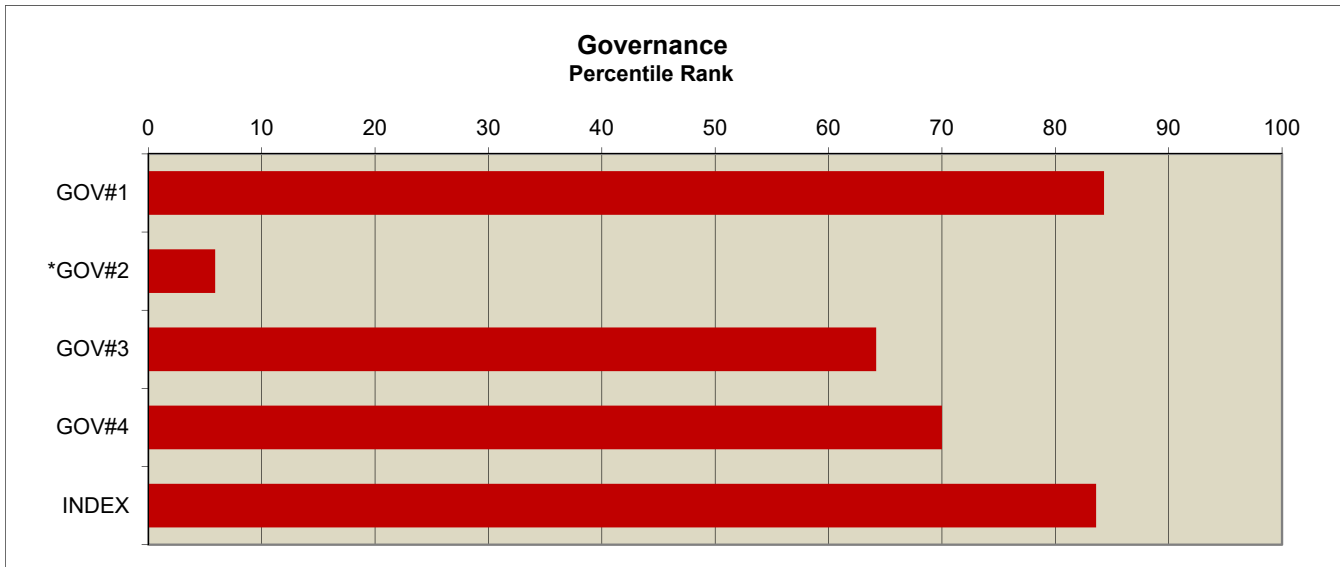
GOV#3 In important decisions in our church, adequate opportunity for consideration of different approaches is usually provided.

GOV#4 Persons who serve as leaders in our church are representative of the membership.

Response Percentages (These are the scores from your congregation.)

| Question | Strongly Disagree | Disagree | Tend to Disagree | Tend to Agree | Agree | Strongly Agree |
|----------|-------------------|----------|------------------|---------------|-------|----------------|
| GOV#1 | 1.0 | 1.3 | 3.2 | 20.1 | 47.5 | 27.1 |
| *GOV#2 | 1.6 | 14.5 | 26.9 | 34.1 | 13.3 | 9.6 |
| GOV#3 | 1.1 | 3.1 | 9.6 | 32.6 | 39.1 | 14.6 |
| GOV#4 | 0.7 | 0.3 | 2.7 | 27.1 | 53.2 | 16.1 |

Comparative Profile (These show how your scores compared with other churches.)



Note: A question with an asterisk is negatively worded relative to the index. In the Comparative Profile, a shorter bar is preferred for questions that are negatively worded. The overall index scores takes this into account in its calculation.

Performance Indices

Spiritual Vitality Index

The Spiritual Vitality Index measures the degree to which members believe that their faith is central to their lives rather than peripheral or episodic. It is an important index in that it correlates mildly with the Hospitality Index. In addition, the Spiritual Vitality Index relates strongly to the percent of household income that members give to the church. This would seem to confirm what Jesus said: "Where your treasure is, there will your heart be also."

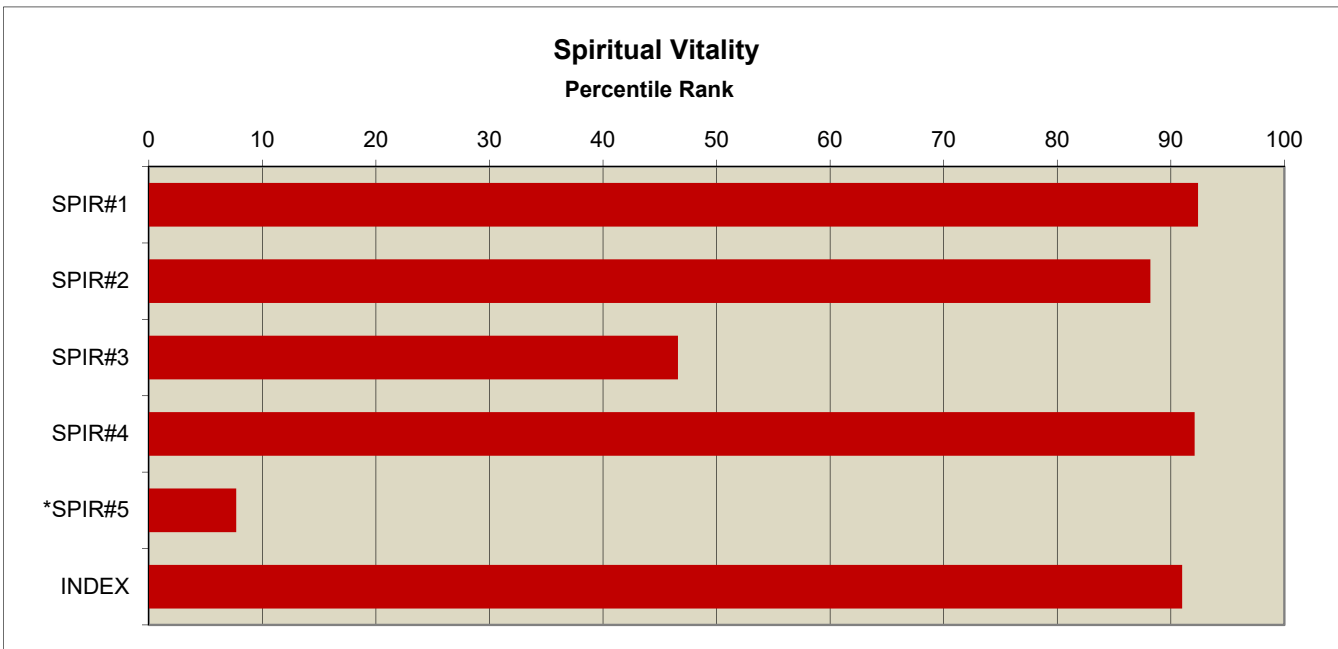
Question Text

| | |
|---------|---|
| SPIR#1 | My spiritual experiences often impact the way I look at life. |
| SPIR#2 | My spirituality is really the basis of my whole approach to life. |
| SPIR#3 | I experience the presence of God in my life. |
| SPIR#4 | I work to connect my faith to all the other aspects of my life. |
| *SPIR#5 | Although my faith is important to me, I feel there are other things more pressing in my life right now. |

Response Percentages (These are the scores from your congregation.)

| Question | Strongly Disagree | Disagree | Tend to Disagree | Tend to Agree | Agree | Strongly Agree |
|----------|-------------------|----------|------------------|---------------|-------|----------------|
| SPIR#1 | 2.9 | 0.0 | 0.9 | 8.4 | 25.9 | 62.0 |
| SPIR#2 | 1.2 | 1.5 | 2.6 | 20.3 | 29.7 | 44.8 |
| SPIR#3 | 1.4 | 1.4 | 0.9 | 11.3 | 35.5 | 49.4 |
| SPIR#4 | 1.5 | 0.0 | 1.2 | 16.1 | 36.4 | 44.8 |
| *SPIR#5 | 20.6 | 36.9 | 25.5 | 12.0 | 3.4 | 1.5 |

Comparative Profile (These show how your scores compared with other churches.)



Note: A question with an asterisk is negatively worded relative to the index. In the Comparative Profile, a shorter bar is preferred for questions that are negatively worded. The overall index scores takes this into account in its calculation.

Performance Indices

Readiness for Ministry Index

In the last thirty years, a shift has taken place in our understanding of ministry. Some churches call it lay ministry, some lay leadership, others, the ministry of the baptized. In each case the basic concept is that all members of a church are called to ministry, and it is the responsibility of the church to help members identify their gifts and connect to ministries that best fit those gifts. The Readiness for Ministry Index measures the degree to which the church has helped members make this transition in their understanding and equipped them for their own particular ministry,

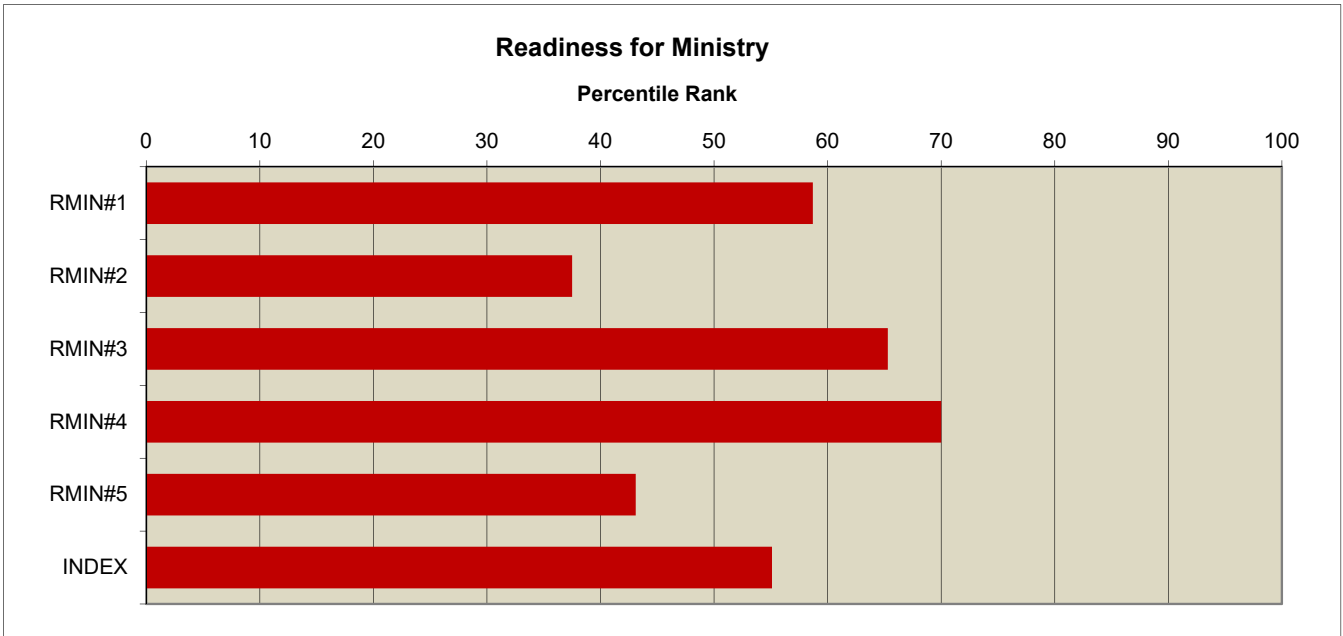
Question Text

- RMIN#1 Our church does a good job helping each member understand that he or she is called to ministry.
- RMIN#2 Our church prepares our members for ministry by helping them discern their gifts.
- RMIN#3 Our church provides opportunities for members to engage in active ministry within the church and to the world.
- RMIN#4 Our church does a good job supporting persons in ministry by reminding them that they are making a difference.
- RMIN#5 In our congregation the laity work with the Rector in leading and planning worship services.

Response Percentages (These are the scores from your congregation.)

| Question | Strongly Disagree | Disagree | Tend to Disagree | Tend to Agree | Agree | Strongly Agree |
|----------|-------------------|----------|------------------|---------------|-------|----------------|
| RMIN#1 | 0.3 | 4.2 | 19.2 | 35.3 | 31.1 | 9.9 |
| RMIN#2 | 1.5 | 6.7 | 30.3 | 34.8 | 19.9 | 6.7 |
| RMIN#3 | 0.3 | 0.0 | 4.4 | 19.8 | 44.3 | 31.1 |
| RMIN#4 | 0.4 | 1.8 | 8.1 | 24.2 | 48.0 | 17.6 |
| RMIN#5 | 1.4 | 6.0 | 12.4 | 25.7 | 42.2 | 12.4 |

Comparative Profile (These show how your scores compared with other churches.)



Performance Indices

Educational Engagement Index

Christian education is a life-long process that enriches a person's spiritual life and better prepares him or her for service in the world. The Educational Engagement Index measures the degree to which members share in that understanding. It also gauges the degree to which the church provides developmentally appropriate education across the entire span of life. In addition, it recognizes that members are living with a variety of schedules and that education must be provided in a way that adapts to member needs.

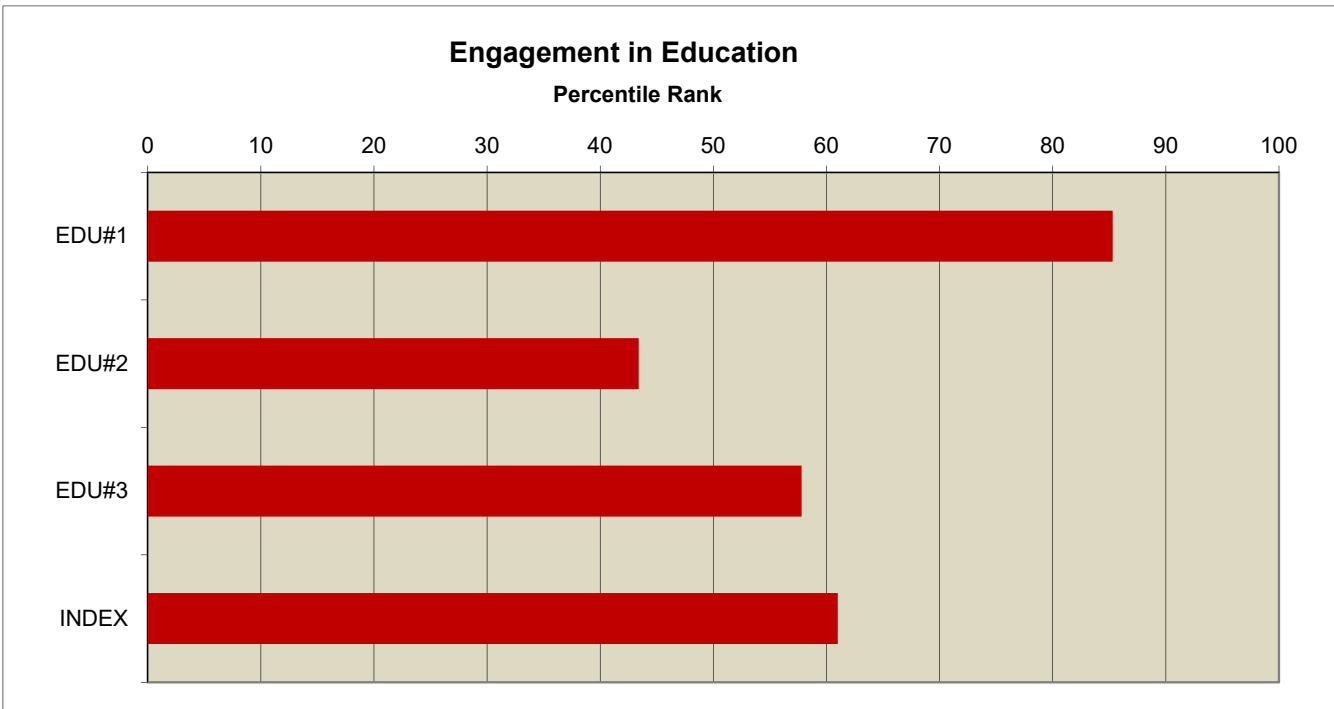
Question Text

| | |
|-------|---|
| EDU#1 | Our members understand that they have a spiritual responsibility for life-long learning and formation. |
| EDU#2 | Our church provides opportunities for education and formation in a variety of ways so that I can find one that fits my complex lifestyle. |
| EDU#3 | Our church provides high quality education that is appropriate to every age and stage of life. |

Response Percentages (These are the scores from your congregation.)

| Question | Strongly Disagree | Disagree | Tend to Disagree | Tend to Agree | Agree | Strongly Agree |
|----------|-------------------|----------|------------------|---------------|-------|----------------|
| EDU#1 | 0.0 | 1.2 | 5.5 | 31.1 | 50.3 | 11.9 |
| EDU#2 | 0.6 | 5.8 | 14.2 | 32.4 | 33.3 | 13.6 |
| EDU#3 | 1.6 | 3.2 | 17.2 | 32.5 | 32.1 | 13.3 |

Comparative Profile (These show how your scores compared with other churches.)



Performance Indices

Worship and Music Index

The worship experience is central to the vitality and growth of a congregation. While members are often engaged in a wide variety of activities, worship is the one experience that every member shares. Research suggests that worship is a primary factor in the morale of a congregation and that when the worship experience of a congregation is vibrant, members also tend to feel energized about the work of the church. The Worship and Music Index seeks to capture the congregation's feelings about the quality of the worship experience.

Question Text

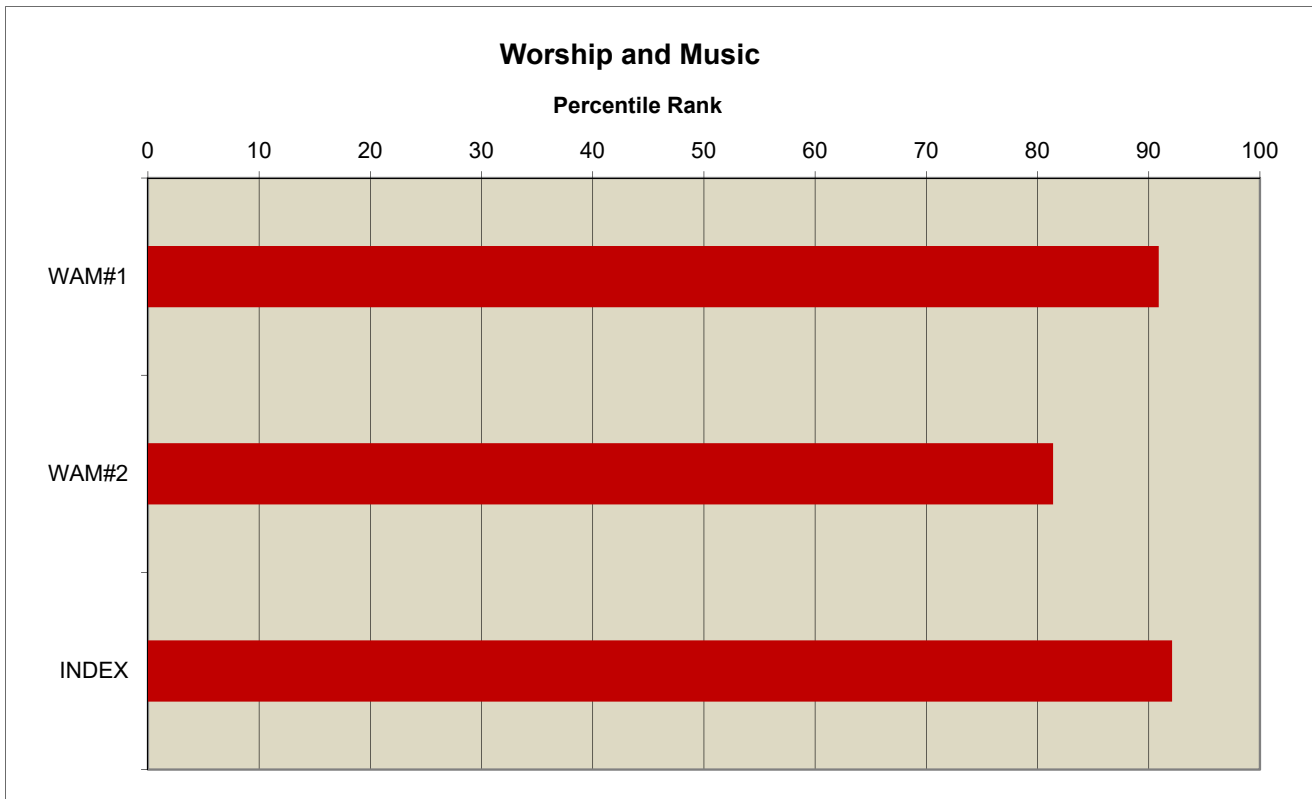
WAM#1 The music at our church is outstanding in quality and appropriate in style to our congregation.

WAM#2 The worship services at our church are exceptional in both quality and spiritual content.

Response Percentages (These are the scores from your congregation.)

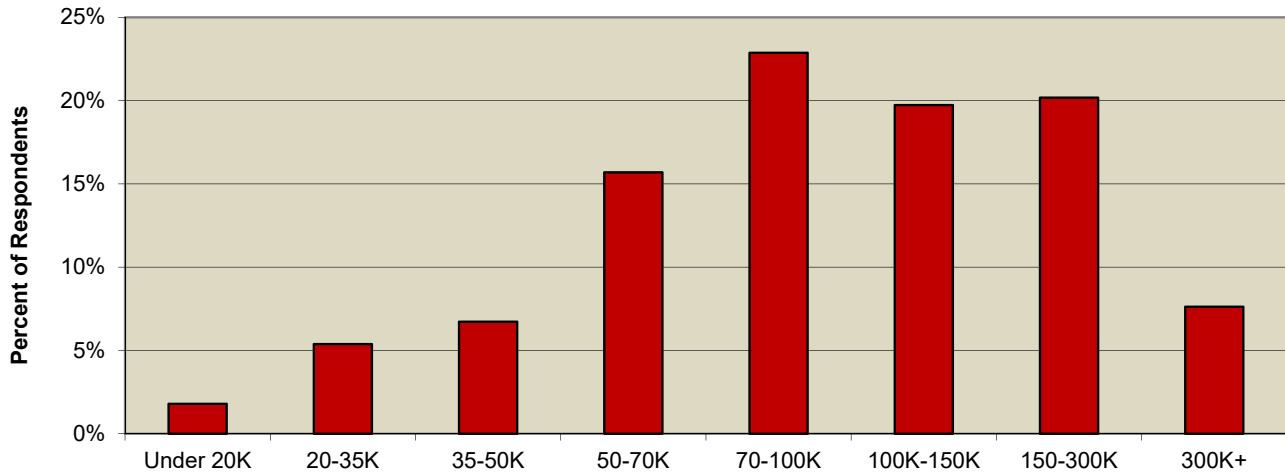
| Question | Strongly Disagree | Disagree | Tend to Disagree | Tend to Agree | Agree | Strongly Agree |
|----------|-------------------|----------|------------------|---------------|-------|----------------|
| WAM#1 | 0.9 | 0.9 | 1.8 | 7.6 | 17.0 | 71.7 |
| WAM#2 | 0.6 | 0.6 | 3.1 | 27.8 | 33.6 | 34.3 |

Comparative Profile (These show how your scores compared with other churches.)

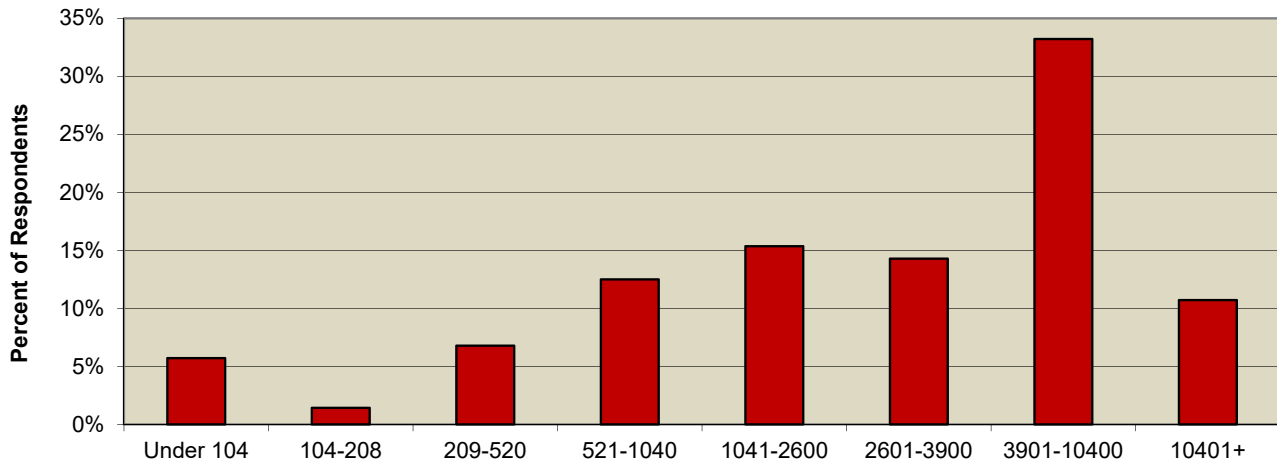


Financial Information

Income



Contributions



| | |
|---------------------------------|-------------|
| Total church income | \$1,407,204 |
| Contribution per household | #DIV/0! |
| Average household income | \$130,123 |
| Average percent of income given | |
| Percentile rank | #VALUE! |

Demographic Data

| | | | | | | | |
|-----------------------------------|------------------------|------------------|--------------------------------|--------------------------------|---------------------|--------------------|---------------------|
| Age | Below 19 | 19-24 | 25-34 | 35-44 | 45-54 | 55-64 | 65+ |
| | 1% | 0% | 12% | 30% | 14% | 22% | 20% |
| Tenure | Under one year | 1-2 years | 3-4 years | 5-10 years | 11-15 years | 16-20 years | Over 20 years |
| | 7% | 9% | 15% | 29% | 16% | 5% | 20% |
| Distance to Church | Under 4 blocks | 5-8 blocks | 1-2 miles | 3-4 miles | 5-9 miles | 10-15 miles | Over 15 miles |
| | 2% | 1% | 5% | 17% | 38% | 24% | 13% |
| Attendance | None | 1-4 times | Once per month | Twice per month | Three times a month | All but 4 weeks | Every week |
| | 0% | 2% | 4% | 11% | 34% | 25% | 25% |
| Attendance Trend* | Third as much | Half as much | Somewhat less | Same | Somewhat more | Twice as much | Three times as much |
| | 2% | 3% | 9% | 65% | 13% | 3% | 7% |
| Gender | Male | Female | | | | | |
| | 41% | 59% | | | | | |
| Ethnic Background | Black/African American | White | American Indian/Alaskan Native | Latino/Hispanic/Spanish origin | Asian | Other | |
| | 1% | 97% | 0% | 1% | 0% | 1% | |
| Level of Education | Less than high school | Some high school | High school grad | Some college | College graduate | Some post graduate | Graduate degree |
| | 0% | 1% | 2% | 6% | 33% | 7% | 51% |
| Persons in Household Total | One | Two | Three | Four | Five | Six or more | |
| | 18% | 38% | 13% | 14% | 8% | 8% | |
| 0 - 5 years | None | One | Two | Three | Four | Five | Six or more |
| | 78% | 11% | 9% | 2% | 0% | 0% | 0% |
| 6 - 12 years | | | | | | | |
| | 80% | 8% | 10% | 2% | 0% | 0% | 0% |
| 13-18 years | | | | | | | |
| | 85% | 7% | 5% | 2% | 0% | 0% | 0% |
| 19-24 years | | | | | | | |
| | 91% | 7% | 2% | 0% | 0% | 0% | 0% |
| 25 or older | | | | | | | |
| | 22% | 18% | 57% | 3% | 0% | 0% | 0% |

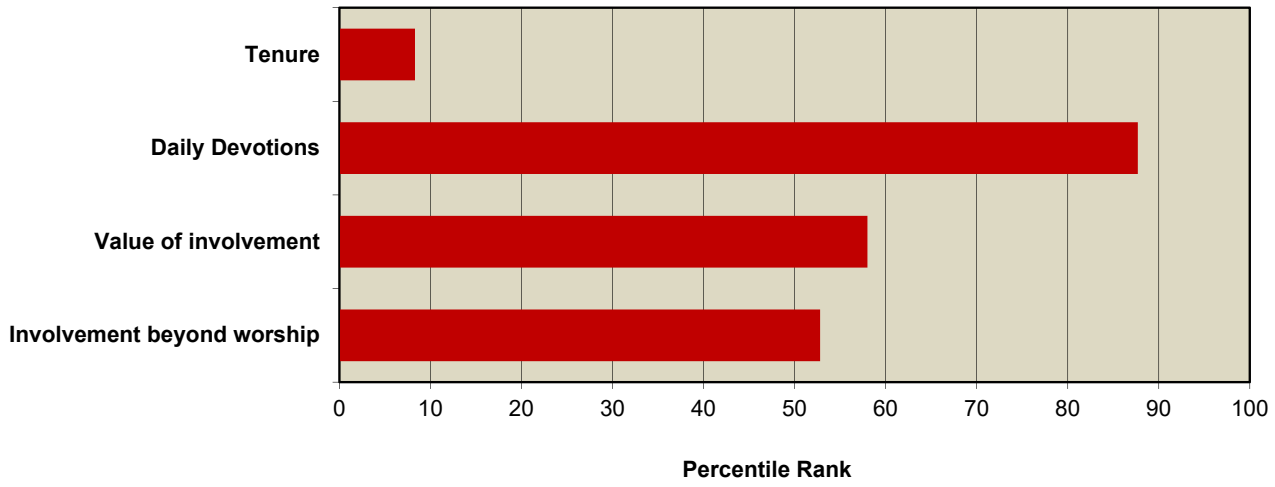
The population during the past three years within one mile of your church building has rapidly increased.

A church where the income in the neighborhood within one mile of the church has increased at the same rate as the larger community over the last three years

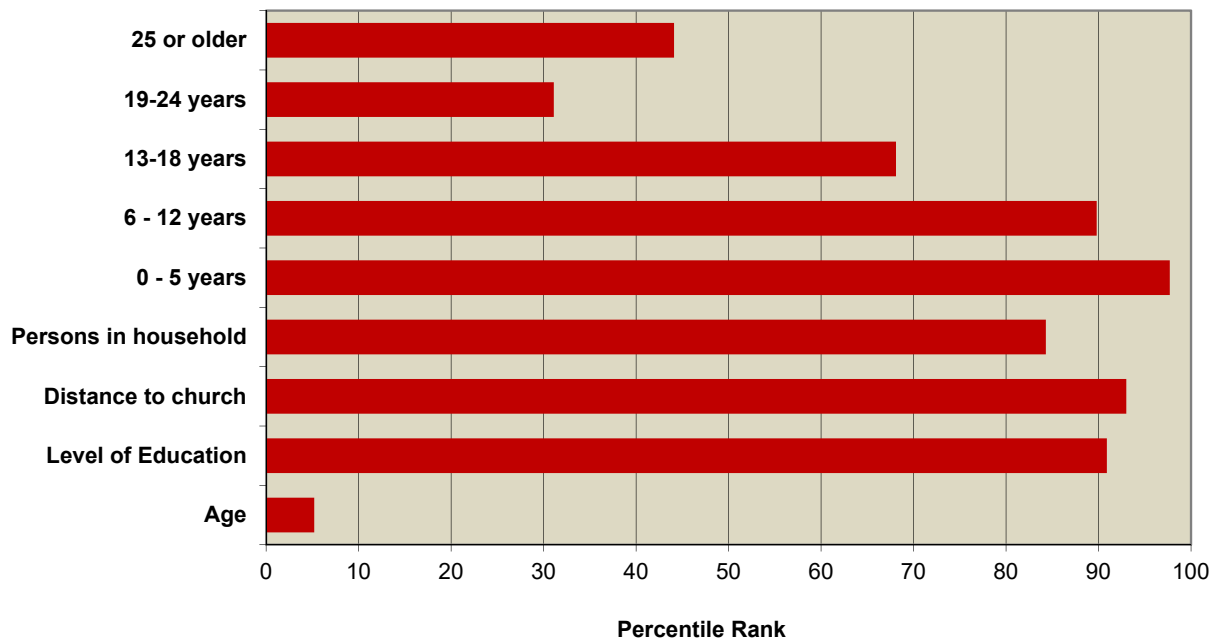
*compared with three years ago

Activity and Demographic Data

Activity



Household



Church Data Form

| | |
|---------------------------------------|--------------|
| Most recent membership | 0 |
| One year earlier | 0 |
| Two years earlier | 0 |
| Three years earlier | 0 |
| Most recent new members | 0 |
| One year earlier | 0 |
| Two years earlier | 0 |
| Three years earlier | 0 |
| Most recent average Sunday attendance | 492 |
| One year earlier | 499 |
| Two years earlier | 480 |
| Three years earlier | 494 |
| Church Assessment Roll | 0 |
| Number of households | 0 |
| Givers of record | 0 |
| Letters sent out | 0 |
| Number returned/participated | 350 |
| Total receipts most recent | \$ 1,407,204 |
| Total receipts one year earlier | \$ 1,300,000 |
| Total receipts two years earlier | \$ 1,250,000 |

Community

| | |
|------------------|--|
| Population trend | A church where the community within one mile of the church has a population that has been rapidly increasing over the last three years |
| Income trend | A church where the income in the neighborhood within one mile of the church has increased at the same rate as the larger community over the last three years |

Critical Abilities for the Next Pastor

| | Least important | 7th most important | 6th most important | 5th most important | 4th most important | 3rd most important | 2nd most important | Most important |
|-----------------------------------|-----------------|--------------------|--------------------|--------------------|--------------------|--------------------|--------------------|----------------|
| Preaching | 2 | 4 | 7 | 16 | 17 | 46 | 72 | 150 |
| Strategic leadership | 6 | 17 | 13 | 28 | 44 | 39 | 89 | 78 |
| Change management | 54 | 57 | 48 | 50 | 46 | 33 | 19 | 7 |
| Teaching/Training | 14 | 22 | 29 | 37 | 70 | 77 | 42 | 23 |
| Pastoral care | 6 | 9 | 32 | 52 | 54 | 61 | 65 | 35 |
| Negotiate/resolve conflict | 27 | 62 | 106 | 55 | 38 | 19 | 5 | 2 |
| Administration | 48 | 79 | 50 | 44 | 36 | 32 | 16 | 9 |
| Community catalyst | 157 | 64 | 29 | 32 | 9 | 7 | 6 | 10 |

Numbers in cells represent total persons indicating that priority.

| Rank | Critical Ability | Score | Compared to other churches your score is |
|---------|---|---------|--|
| First | Preaching - Capacity to inspire and connect people to God's word | 2160.00 | Average |
| Second | Strategic leadership - Capacity to cast a vision and lead the church toward realization of the vision | 1892.00 | Average |
| Third | Pastoral care - Capacity to engage people empathetically and care for persons in times of need | 1699.00 | Average |
| Fourth | Teaching/Training - Capacity to deepen understanding, form character, and equip members with new skills | 1583.00 | Average |
| Fifth | Change management - Capacity to lead a church through a significant and necessary period of change | 1129.00 | Average |
| Sixth | Administration - Capacity to manage a church operationally including facilities, finances and staff | 1088.00 | High |
| Seventh | Negotiate/resolve conflict - Capacity to help a church deal with conflict through training, negotiation, and mediation | 1044.00 | Average |
| Eighth | Community catalyst - Capacity to function on a larger stage beyond the church and to rally a variety of individuals and groups to address critical issues | 709.00 | Average |

Stewardship Profile

| | | | | | |
|----------------------|---|--------------------------|--------------|---------|--|
| Number of households | 0 | Total church income | \$ 1,407,204 | % Given | |
| Givers of record | 0 | Average household income | \$ 130,123 | | |

;

| | Strongly disagree | Disagree | Tend to disagree | Tend to agree | Agree | Strongly Agree | Don't know |
|--|-------------------|----------|------------------|---------------|-------|----------------|------------|
| (16) On the whole, I am in favor of having an annual stewardship appeal. | 4.5% | 4.2% | 14.4% | 23.4% | 30.4% | 13.8% | 9.3% |

| | Household Income | Much lower | Lower | About the Same | Higher | Much higher | Don't know |
|---|------------------------------|-------------|-------------|----------------|--------------|-------------|-------------|
| (94) My total financial giving to the church in the next year is likely to be | Below \$20,000 | 0 | 0 | 3 | 0 | 0 | 1 |
| | \$20,000 - \$34,999 | 0 | 0 | 6 | 4 | 0 | 2 |
| | \$35,000 - \$49,999 | 0 | 0 | 7 | 7 | 1 | 0 |
| | \$50,000 - \$69,999 | 1 | 0 | 13 | 16 | 3 | 1 |
| | \$70,000 - \$99,999 | 0 | 0 | 28 | 19 | 2 | 2 |
| | \$100,000 - \$149,999 | 0 | 1 | 19 | 20 | 3 | 0 |
| | \$150,000 - \$299,999 | 1 | 2 | 26 | 11 | 2 | 0 |
| | \$300,000 + | 0 | 2 | 10 | 5 | 0 | 0 |
| | Total Percent | 0.9% | 2.3% | 51.4% | 37.6% | 5.0% | 2.8% |

| | Least Important | 4th most important | 3rd most important | 2nd most important | Most important |
|---|-----------------|--------------------|--------------------|--------------------|----------------|
| (97) My personal faith and understanding of being generous in supporting God's work in the world | 3.8% | 5.1% | 5.4% | 13.5% | 72.1% |
| (30) How well the church manages its finances | 14.7% | 36.5% | 25.6% | 20.8% | 2.2% |
| (94) How engaged our church is in reaching out to the needs of the world | 10.9% | 24.0% | 30.8% | 29.8% | 4.5% |
| (1) The current state of the economy | 66.7% | 12.2% | 6.1% | 7.1% | 8.0% |
| (14) The effectiveness of our church's ministry in making a real difference in my life and in the lives of others | 3.8% | 22.1% | 32.1% | 28.8% | 13.1% |

| | Strongly disagree | Disagree | Tend to disagree | Tend to agree | Agree | Strongly Agree | Don't know |
|--|-------------------|----------|------------------|---------------|-------|----------------|------------|
| (69) My church does a good job providing me with the information that enables me to give joyfully to the work of the church. | 1.6% | 1.6% | 6.4% | 26.3% | 43.3% | 14.7% | 6.1% |
| (15) I am frustrated that our church spends so much time talking about finances. | 14.1% | 43.9% | 27.2% | 7.1% | 2.2% | 1.9% | 3.5% |